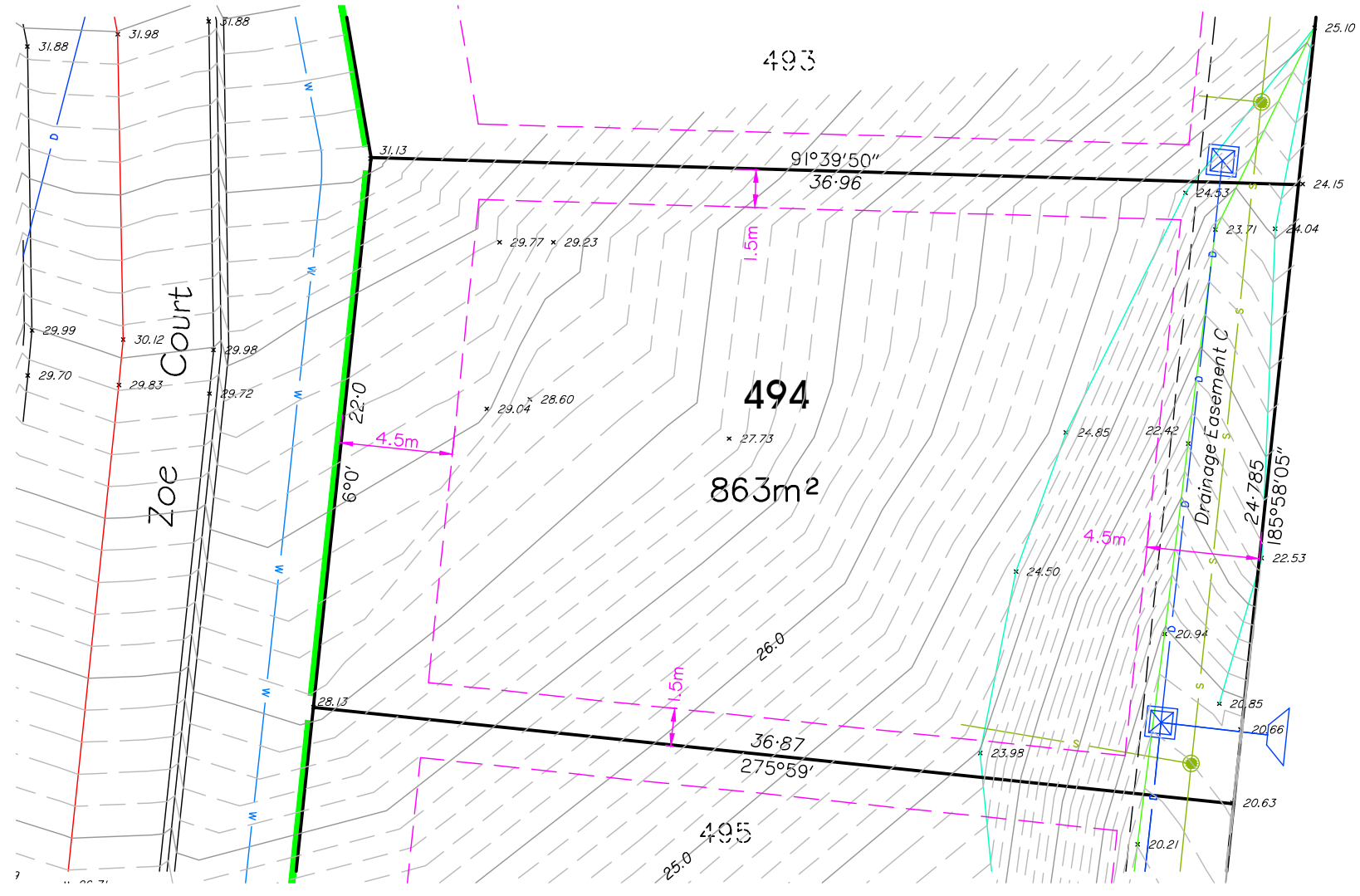




LEGEND

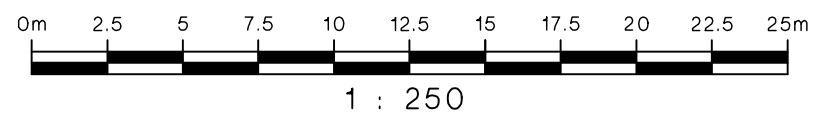
These standard symbols can be found in the drawing.

- MAJOR CONTOUR
- MINOR CONTOUR
- SEWER LINE
- KERB
- STORMWATER LINE AND MANHOLE
- WATER LINE
- TOP OF BANK
- BOTTOM OF BANK
- BOTTOM OF WALL
- ALLOWABLE DRIVE WAY ACCESS
- BUILDING ENVELOPES
- SEWER M/H
- WATER FH
- WATER STOP VALVE



5
RP718657

The title boundaries as shown hereon were not marked at the time of survey and have been determined by plan dimensions only and not by field survey. Services shown hereon have been located where possible by field survey. If not able to be located, services have been plotted from relevant authority records and have been noted accordingly on this plan. Prior to any demolition, excavation or construction on the site, the relevant authority should be contacted for possible location of further underground services and detailed locations of all services.



Revisions		Level Datum: AHD (DER) B.M. Used: PM 114303 RL12.026 Coordinate Projection: Coordinate Datum: Origin of Coordinates: E: Meridian: N: Map Reference: Job No: 27736/29-03 File No: 27736_066B.dwg Surveyed by:	CLIENT: ELEMENTS NQ Project: DETAIL AND LEVEL SURVEY OF Lot 494 on SP267473 Parish of: Coonambelah County of: Elphinstone Local Authority: Townsville C.C.	 brazier motti	Date: 28th August, 2014 Sheet 1 of 1 Sheets Scale: 1:250 @ A3 Plan No: 27736/066 B
No.	Date				
A	28/08/14	Original issue	CFM		
B	08/09/14	General amendments	TDB		
		Drawn: SLR	Approved:	surveying town planning project management mapping and GIS	