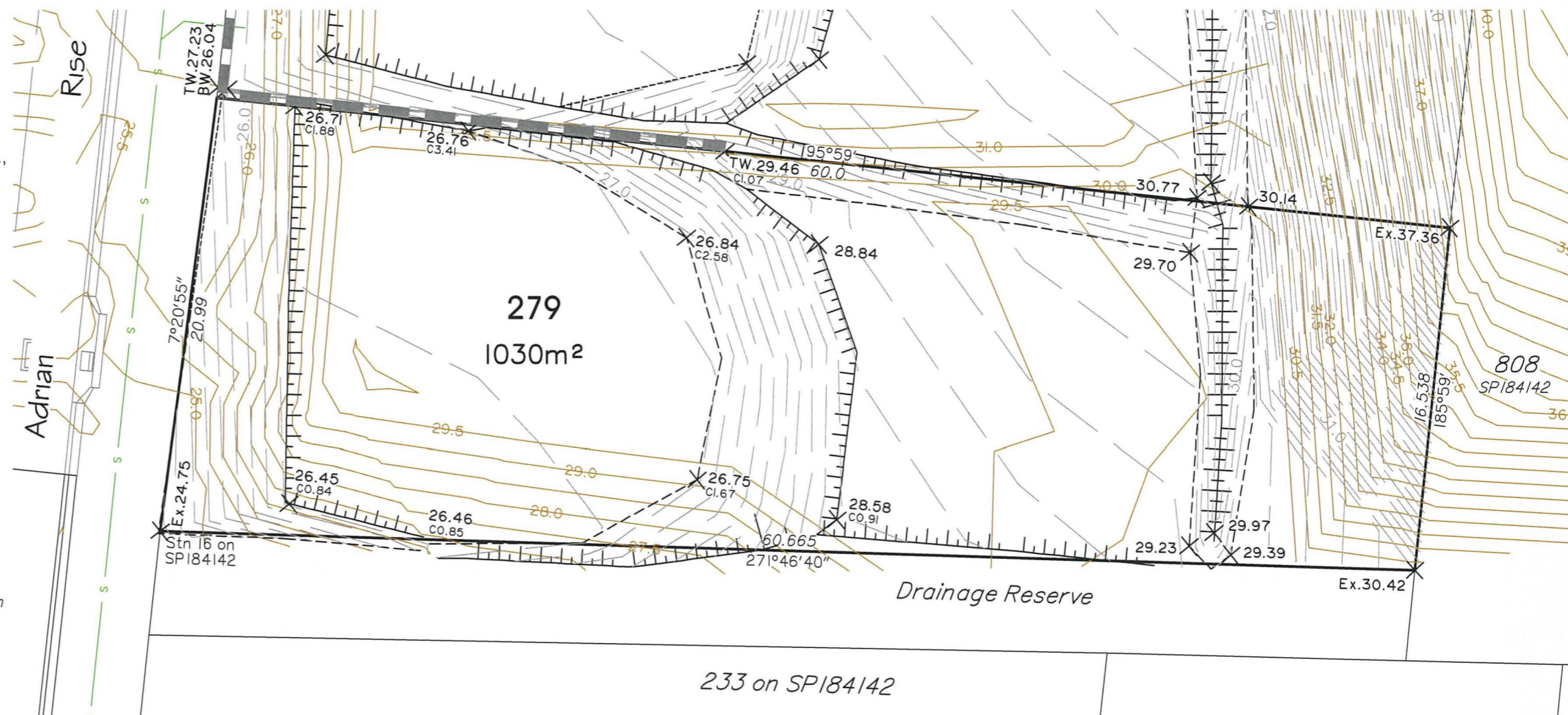




LEGEND

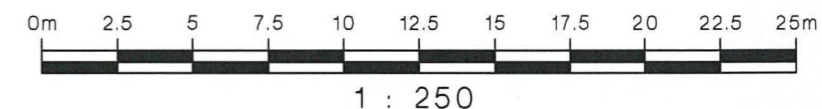
- 4.50 — Natural Surface Contour based on A.H.D., 0.5m Interval
- - - 6.6 - - - Finished Surface Contour based on A.H.D., 0.2m Interval
- ci.58 — Cut or Fill heights at Lot corners
- 34.65 — Final Surface Levels at Lot corners based on A.H.D.
- Retaining Wall
- Top of Batter
- Change of Grade
- — — Sewer Alignment
- Sewer M/H



BRAZIER MOTTI PTY. LTD. ACN 066 411 041
hereby certify that the proposed allotments shown hereon
are capable of being staked by a Cadastral Surveyor.

[Signature] Director
[Signature] Director
 Date: 14/3/2013

NOTE: THIS PLAN SHOWS DETAILS OF PROPOSED LOT 279
ON PROPOSAL PLAN 27736/010C WHICH ACCOMPANIED THE
RECONFIGURATION APPLICATION AND WAS APPROVED BY
TOWNSVILLE CITY COUNCIL ON THE 15th DECEMBER 2005,
SUBJECT TO CONDITIONS.




VENDOR: RIMPAC (AUSTRALIA) PTY LTD

Revisions			
No.	Date	Details	Check
A	9/01/12	Original issue	TDB
B	13/03/13	Design Levels Amended	CFM

Level Datum:
 B.M. Used:
 Coordinate Projection:
 Origin of Coordinates: E:
 Meridian: N:
 Map Reference:
 Job No: 27736/34-1
 File No: 27736_027B.dwg
 Surveyed by:
 Drawn: SLR
 Approved:

CLIENT:
RIMPAC (AUSTRALIA) PTY LTD
 Project:
**DISCLOSURE PLAN OF
 Lot 279
 Being Part of Lot 808 on SP184142**
 Parish of: Coonambelah County of: Elphinstone
 Local Authority: Townsville C.C. Locality: Mt Louisa



brazier motti

P 1300 267 878 Date: 13th March, 2013
W www.braziermotti.com.au Sheet 1 of 1 Sheets
 Scale: 1: 250 @ A3
 Plan No:
27736/027 B
 TOWNSVILLE | AYR
 CAIRNS | MACKAY
 surveying | town planning | project management | mapping and GIS