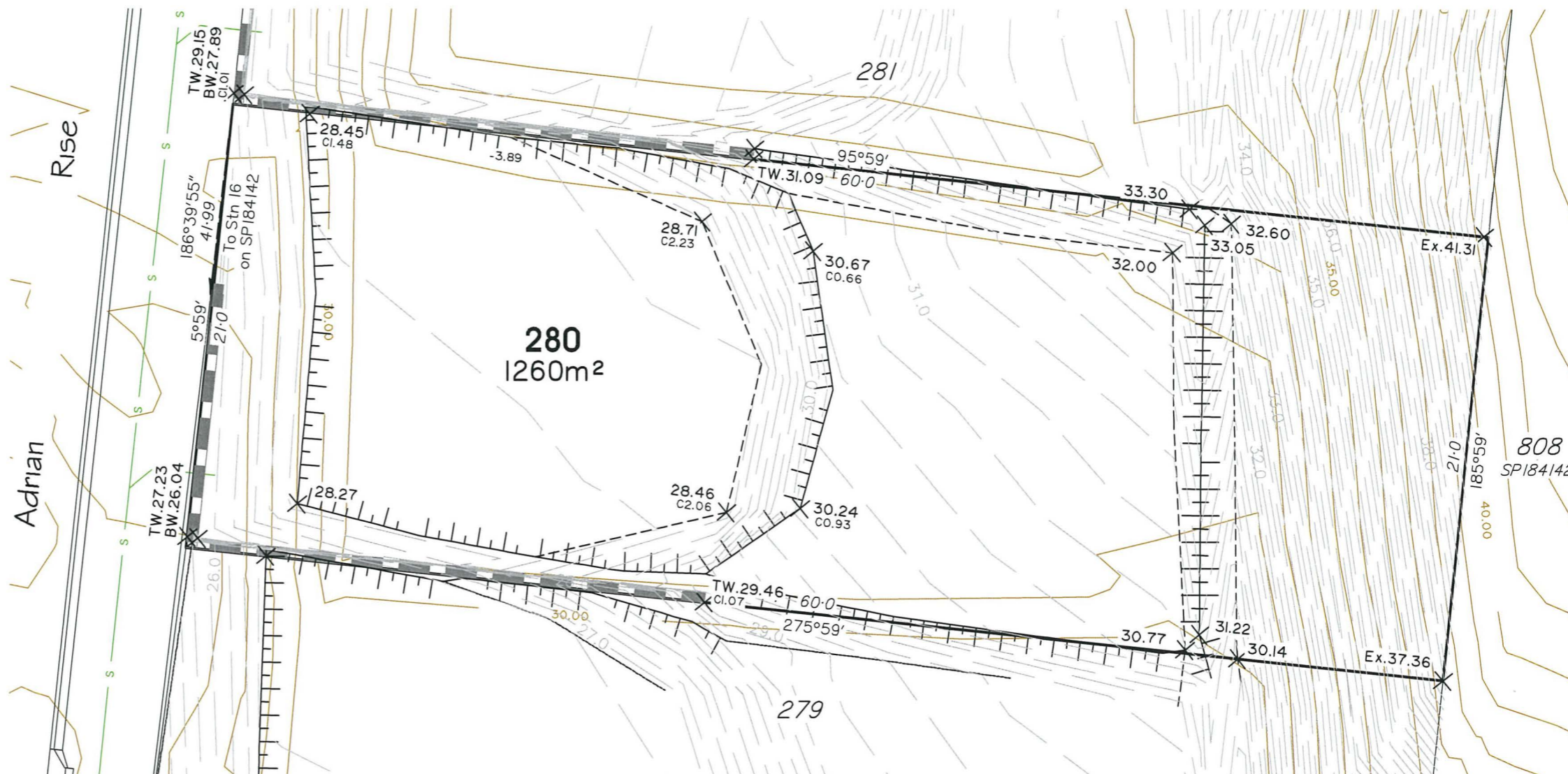




LEGEND

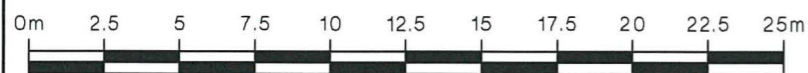
- Natural Surface Contour based on A.H.D., 0.5m Interval
- Finished Surface Contour based on A.H.D., 0.2m Interval
- Cut or Fill heights at Lot corners
- Final Surface Levels at Lot corners based on A.H.D.
- Retaining Wall
- Top of Batter
- Change of Grade
- Sewer Alignment
- Sewer M/H



BRAZIER MOTTI PTY. LTD. ACN 066 411 041
hereby certify that the proposed allotments shown hereon
are capable of being staked by a Cadastral Surveyor.

Director
 Director
 Date: 14/03/2013

NOTE: THIS PLAN SHOWS DETAILS OF PROPOSED LOT 280 ON PROPOSAL PLAN 27736/010C WHICH ACCOMPANIED THE RECONFIGURATION APPLICATION AND WAS APPROVED BY TOWNSVILLE CITY COUNCIL ON THE 15th DECEMBER 2005, SUBJECT TO CONDITIONS.



1 : 250

VENDOR: RIMPAC (AUSTRALIA) PTY LTD

Revisions			
No.	Date	Details	Check
A	11/01/12	Original issue	TDB
B	13/03/13	Design Levels Amended	CFM

Level Datum:
B.M. Used:
Coordinate Projection:
Origin of Coordinates: E: N:
Meridian:
Map Reference:
Job No: 27736/34-1
File No: 27736_028B.dwg
Surveyed by:
Drawn: SLR
Approved:

CLIENT:
RIMPAC (AUSTRALIA) PTY LTD

Project:
**DISCLOSURE PLAN OF
Lot 280
Being Part of Lot 808 on SP184142**

Parish of: Coonambelah County of: Elphinstone
Local Authority: Townsville C.C. Locality: Mt Louisa

brazier motti

☎ 1300 267 878
 🌐 www.braziermotti.com.au

Date: 13th March, 2013
 Sheet 1 of 1 Sheets
 Scale: 1: 250 @ A3
 Plan No:
27736/028 B

TOWNSVILLE | AYR
 CAIRNS | MACKAY

surveying | town planning | project management | mapping and GIS